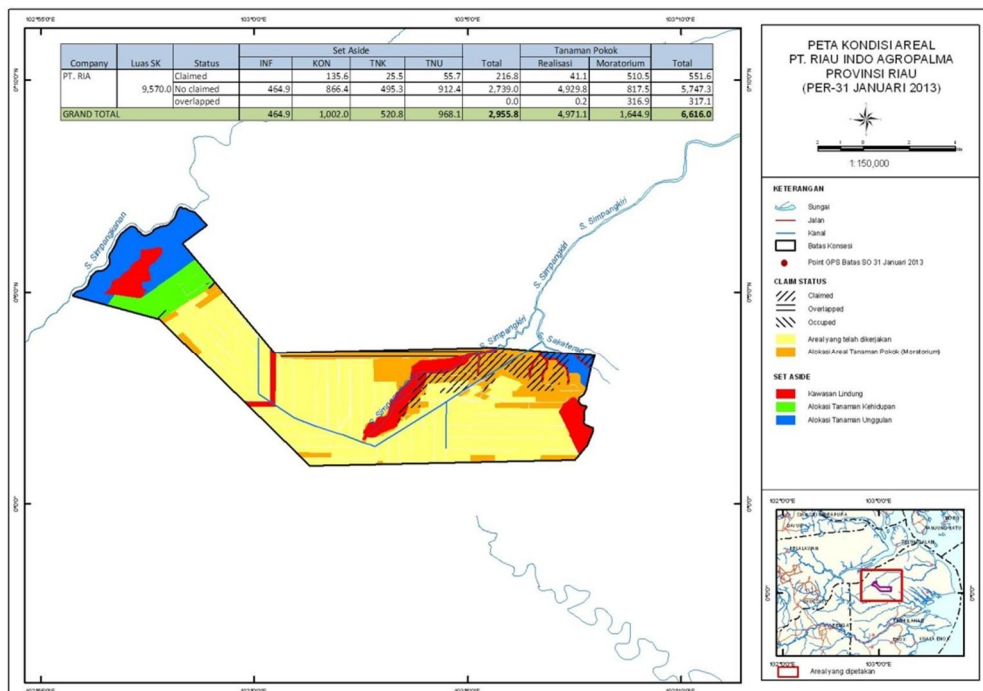


VERIFICATION REPORT ON LOGGING IN TANAMAN KEHIDUPAN AREA OF PT. RIAU INDO AGROPALMA (RIA)

ENGLISH TRANSLATION BY EYES ON THE FOREST

[\(Original PDF copy posted at Eyes on the Forest website\)](#)



Produced by:
Eyes on the Forest, TFT, APP/SMF, PT. RIA

RIAU PROVINCE
MAY 2013

A. BACKGROUND

1. Eyes on the Forest Report on 15 May 2013
2. Meeting between APP and NGOs on 16 May 2013

B. OBJECTIVE

1. Verification of Eyes on the Forest Report

C. DETAILS OF EVENTS AND ACTIVITIES

1. Object : tanaman kehidupan (crops for livelihood) area inside PT. RIA concession
2. Details of activities
 - a. Wednesday, 29 May 2013 : Field verification of Tanaman Kehidupan, interview with Simpang Kateman village head, Rukun Tani Cooperative Staff and members in PT. RIA concessions.
 - b. Thursday, 30 May 2013 : Verification of document and data related to Tanaman Kehidupan management area at PT. Ruas Utama Jaya Pekanbaru office, and continued preparation of verification report.

3. Participants :

Participants for the Field Verification :

- a. Nursamsu : Eyes on the Forest
- b. Kasman AR. : Eyes on the Forest
- c. Azan Zuhri : Eyes on the Forest
- d. Yudi Purnomo : TFT Indonesia
- e. Selvia Siling : APP/SMF
- f. Isra Meddy : Ka. Unit PT. RIA
- g. Widya Purnama : SMF Region
- h. Fahrozi : Simpang Kateman Village Head
- i. Zakaria : Simpang Kateman Village Affairs
- j. Marjuni : Koperasi Rukun Tani Cooperative Staff
- k. Zulfahri : Simpang Kateman Sub Village Head

Participants for the Verification of Documents and Data Verification :

- a. Nursamsu : Eyes on the Forest
- b. Kasman AR. : Eyes on the Forest
- c. Azan Zuri : Eyes on the Forest
- d. Yudi Purnomo : TFT Indonesia

- e. Selvia Siling : APP/SMF
- f. Isra Meddy : PT. RIA Unit Head
- g. Widya Purnama : SMF Region
- h. Setyo Wijayanto : PT. RIA Staff
- i. Trisna TH. : PT. RIA Staff
- j. Agus Herdiyaman : PT. RIA Staff

D. FINDINGS

1. EoF's findings that seven heavy equipments were felling the natural forest on 8 April 2013 at N0°4'38.93" E102°57'4.18" in PT RIA's concession.
Verification result on 29 May 2013:
 - a. TRUE, in the industrial timber plantation concession of PT Riau Indo Agropalma (RIA). The findings are located in the development area for Tanaman Kehidupan (crops for livelihood) in accordance with the SK from the Director of Forestry Enterprises No. 6/BPHT-3/2012, dated April 11th 2012.
 - b. Eight units of heavy equipments (non-operating) were found, along with natural wood piles and a number of workers planting acacia at coordinates N0°1'36.28" E103°1'48.52".
2. Tanaman Kehidupan area in PT RIA's plantation concession is included in APP's FCP dated February 5th 2013. Considering the social impacts, agreement with Rukun Tani cooperative on January 13th 2011, which happened before FCP on February 5th, APP and TFT therefore decided that the land preparation on Tanaman Kehidupan area can proceed in accordance with the Official Report of tanaman kehidupan verification that covers the legal, permit and social aspects. Based on reports from PT RIA, the total area being continued or to be realized in February-April 2013 was 70 hectares.
3. Based on the timber stock monitoring report by TFT-APP-RIA until 29 May 2013, by the inventory check (also called SO /Stock Opname) period of 8 February 2013 the total wood stock SO was 9,795.83 M3, delivered to IKPP's mill of 3,461.03 M3; 1,492.93 M3 for private use and the rest is 5,864.87. For the SO period of 8 May 2013, total SO timber was 4,233.88 M3, so the total of SO timber stock per 29 May 2013 was 10,080.75 M3.
4. The Tanaman Kehidupan area of 521 hectares is included in the Work Plan of Plantation Forest Product Utilization (Rencana Kerja Usaha Pemanfaatan Hasil Hutan Tanaman Industri) of PT RIA according to the Decree of Minister of Forestry No. 99/VI-BPHT/2008, dated April 8th 2008 and has been revised in accordance with the Decree of Minister of Forestry No. 141/VI-BUHT/2011, 19 October 2011.
5. Realization of RKT 2012 on land preparation for tanaman kehidupan reached the size of 181 hectares. The realization of timber production use were 178 M3 of KB (large logs), 688 M3 of KBS (medium logs) and 19,530.90 M3 of KBS (small logs). 20,396,90 M3 in total.
6. PT RIA's RKT 2012 is based on the SK from Director of Forestry Enterprises No. SK 6/BUHT-3/2012, 11 April 2012. It covers the target of land preparation in tanaman pokok

- (primary plants) area of 698 hectares with production volume taxaxion of 57,447 M3 and the land preparation on tanaman kehidupan area of 316 hectares with taxaxion of 46,213 M3.
7. PT RIA's RKT 2013 is based on the SK from Director of Forestry Enterprises No. 6/BUHT-3/2013, 13 May 2013. RKT 2013 covers the land preparation of 340 hectares for planting the first cycle on tanaman kehidupan area with acacia as the type of crops planted, with timber-use taxation of 33 M3 of KB (large logs), 869 M3 of KBS (medium logs), 31,114 M3 KBK (small logs). 32,016 M3 in total.
 8. PT RIA's RKT 2012, the realization of land preparation in tanaman pokok (primary plants) of 272 hectares and the MHW (mixed hardwood) production volume from land preparation was 12,925.32 M3.
 9. According to PT RIA's concession map from Ministry of Forestry in 2011 downloaded in September 2011 from the Ministry of Forestry's Website GIS, operation of tanaman kehidupan happens outside PT RIA's concession: the GPS coordinate N 0°04.595' E 102°56.962' is 55 meters away and the GPS coordinate N 0°04.538' E 102°57.159' is 71 meters away.
 - a. Based on HTI concession map held by PT RIA which was digitized from map of the Minister of Forestry Decree number 61/Menhut-II/2006, dated 22 March 2006, operation of tanaman kehidupan is located inside PT RIA's concession,
 - b. Based on HTI concession map of PT RIA from Official Report on Self-Setting Boundary and Boundary of Work Area Unifying of IUPHKHT-PT RIA license with work area of IUPHHK-HA (selective logging concession) of PT. Bhara Induk dated 20 February 2012, the operation of tanaman kehidupan is situated outside PT RIA's concession :
The GPS coordinate N 0°04.595' E 102°56.962' is 6 meters away and the GPS coordinates N 0°04.538' E 102°57.159' is 12 meters away.
 10. For the Tanaman Kehidupan area, there was no HCVF and HCS assessments conducted prior to land preparation, on 9 – 11 May 2013 there was HCVF pre assesement conducted by PT. Ekologika.
 11. PT RIA has not yet data on peat depth distribution.
 12. Though Rukun Tani cooperative urged PT RIA to hasten the development of Tanaman Kehidupan on January 3rd 2013 and Letter of Cooperation Agreement had been released, the Village Chief of Simpang Keteman Village and Rukun Tani Cooperation Administrator stated that if there was any of PT RIA's policies postponing the development with particular and acceptable reasons, then it could be deliberated to forum. In this case, until May 29 2013, PT RIA has never come to Rukun Tani cooperative regarding APP's policy.
 13. The development of Tanaman Kehidupan area in accordance with Letter of Partnership Agreement between PT RIA and Rukun Tani cooperative No. 002/TK/RJA/2011, 13 January 2011, covered an area of 478.5 hectares. The agreement stated among others: 1) the partnership on the Tanaman Kehidupan management plants forestry crops species. 2) PT RIA is responsible to warrant all expenses related to tanaman kehidupan program, starting from surveying, land clearing, planting, and maintenance until harvest time. 3) The cooperative

obtains revenue of Rp 10,000 per ton of acacia timber production based on the weight and shared after the entire products are transported and weighed at PT. Indah Kiat Pulp and Paper in Perawang.

14. According to PT RIA, size of Tanaman Kehidupan area is 521 hectares, while Village Head of Simpang Keteman and administrators of Rukun Tani cooperative said based on agreement between PT RIA and Rukun Tani cooperative, Tanaman Kehidupan size is 478.5 hectares.
15. Management of tanaman kehidupan area by PT RIA started after serious land claim by community of Desa Simpang Kateman around 2009 to 2010.
16. Legal basis of tanaman kehidupan development
 - o Business Work Plan (Rencana Kerja Usaha/RKU) of Utilization of Industrial Timber Plantation of PT RIA is in line with Minister of Forestry Decree number 99/VI-BPHT/2008, dated 08 April 2008 and has been revised to Minister of Forestry Decree number 141/VI-BUHT/2011, dated 19 October 2011.
 - o RKT PT RIA 2012 is in line with Decree Letter of Director of Forestry Enterprise number SK 6/BUHT-3/2012, dated 11 April 2012, where the plan of tanaman kehidupan development is 316 hectares, and taxation of production is 46,213 cubic meter.
 - o Land Use as regulated by Minister of Forestry Decree number 70/1995 jo SK 246/1996 jo Regulation of Ministry of Forestry number 21 year 2006.
 - o Definition on tanaman kehidupan based on Regulation P 21/2006 in Article 1: "*Tanaman Kehidupan is crop on purpose of improving community welfare that in form of main crop producing forest timber products or annual plantation/trees producing non-timber forest products or combination of both products and managed at economic business scale by community through partnership scheme with companies holding IUPHHK-HT industrial timber license that relevant/concerned.*".
17. Nearest village from the concession of RIA is Desa Tanjung Simpang which an extension of (main) Desa Simpang Keteman in 2002.

E. RECOMMENDATION

1. Based on the EoF findings and verification result dated 29 May 2013 as well as clarification by PT. RIA dated 30 May 2013, as point 9 above; verification should immediately be conducted regarding concession boundary as available on Official Report on Self-Setting Boundary and Boundary of Work Area Unifying of IUPHKHT-PT RIA license with work area of IUPHHK-HA (selective logging concession) of PT. Bhara Induk dated 20 February 2012 by the latest on 11 June 2013 by:
 - Eyes on the Forest team (Kasman and Zuhri)
 - Dinas Kehutanan Indragiri Hilir (Agung Priyono, S.hut) or one in charge
 - PT. Bhara Induk (Eko Adi Purnomo) or one in charge
 - PT. Riau Indo Agropalma (Trisna TH)
 - APP/SMF (Selvia Siling)

2. Based on the EoF findings in PT. RIA therefore APP/SMF immediately decides and publishes Moratorium Maps of all forest management units (UMH) which are its suppliers.

F. Appendix

1. List of participants for the field verification on 29 May 2013
2. List of participants for the document verification on 30 May 2013

This verification report made in 4 (four) duplicates and to be used appropriately.

Pekanbaru, 30 May 2013.

All participants approved verification,

Eyes on the Forest,

PT. RIA

Nursamsu

Isra Meddy

TFT Indonesia,

APP/SMF,

Yudi Purnomo

Selvia Siling