



Tropical rainforest clearcutting by PT Arara Abadi (Distrik Nilo), a subsidiary of Asia Pulp Paper (APP), in Tesso Nilo block, Sumatra



Investigation by Eyes on the Forest October 2011 – Published in February 2012

Eyes on the Forest (EoF) is a coalition of environmental NGOs in Riau, Sumatra: Friends of the Earth "Walhi" Riau Office, Jikalahari "Riau Forest Rescue Network" and WWF-Indonesia, Riau Program.

EoF monitors the status of the remaining natural forests in Sumatra's Province of Riau and disseminates the information worldwide.

More news on Eyes on the Forest, go to: <http://www.eyesontheforest.or.id>
Email: eof@eyesontheforest.or.id

Investigative findings by EoF

PT Arara Abadi of Nilo district is a part of permit granted to the company amounting to 299,975 hectares based on Minister of Forestry Decree Number 743/Kpts-II/1996, dated 25 November 1996. Data obtained from Riau Forestry Service says the concession of PT Arara Abadi distrik Nilo is around 26,438 hectares. The APP subsidiary has converted natural forest to pulpwood plantation (industrial timber plantation/HTI) since end of 1990s. It means that this concession has harvested acacia trees for 2-3 times since it was first clearcut.

EoF found at least 250 hectares of natural forest that has just been clearcut by APP's subsidiary, PT Arara Abadi, where no heavy machines found there at the time when investigation conducted.

In early July 2011 a Sumatran tiger found dead after being trapped by snare for six days in land that part of PT Arara Abadi's concession where it was found starving and in a worse condition. WWF Indonesia said that PT Arara Abadi, APP's subsidiary, failed to protect the concession from illegal activities such as installment of traps to capture animals which also jeopardized critically endangered species just like sumatran tiger. PT Arara Abadi have recognized the presence of the Sumatran tiger as well as snares installed by villagers to trap animals, but the pulp supplier failed to secure the concession.ⁱ

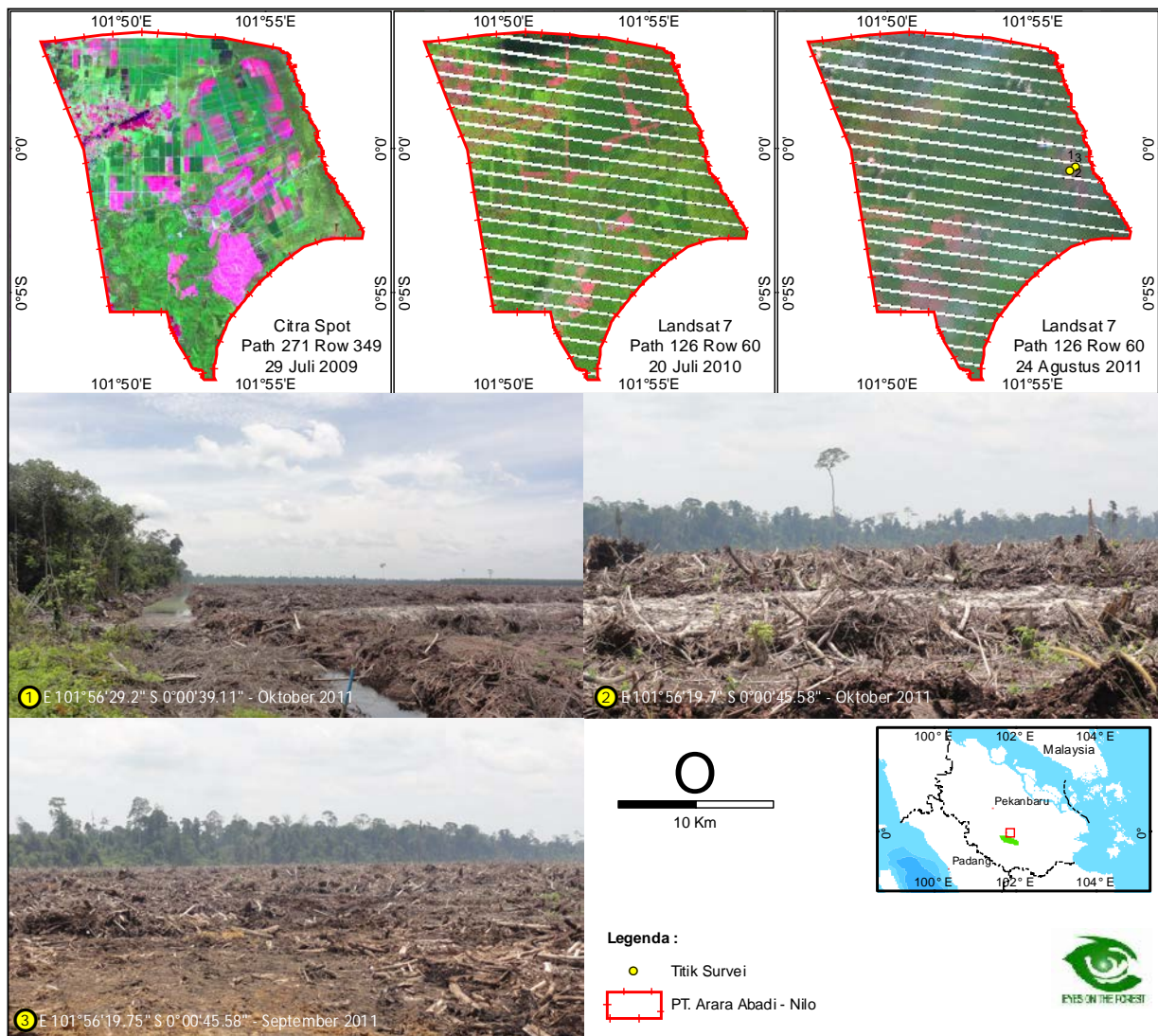
Tesso Nilo is the last remaining block of a critically endangered dry lowland forest type, which lost more than 90% of its original coverage on the island since 1985ⁱⁱ. It has one of the world's highest levels of vascular plant diversityⁱⁱⁱ and is home to Sumatra's endangered tigers and elephants and many other species^{iv}. SMG/APP has been sourcing tropical timber from its own concession and third parties including illegal loggers (in 2003^v) operating in this area. Despite the highly threatened status of this natural forest and its wildlife SMG/APP is continuing to clear even the last available natural forest in their Tesso Nilo concessions, threatening their critically endangered resident tigers^{vi}.

Eyes on the Forest calls on the Sinar Mas Group's Asia Pulp & Paper company to stop clearing natural forest in Sumatra, all other Indonesian islands and throughout the world today.

Eyes on the Forest calls on customers and other business partners to not trust SMG/APP's public relations claims. Sumatra's forests and species are at the 11th hour. Responsible paper and pulp purchasers should not contribute

to their demise. Join the growing list of other responsible companies that have stopped sourcing from APP.

Series of maps and pictures of EoF investigation in PT Arara Abadi Sektor Nilo in October 2011



Map 1. Survey points in natural forest based on Landsat satellite image in July 2010 and the forest is converted as shown by Landsat image in August 2011. Some pictures taken by EoF investigators in October 2011 confirmed the findings.



Photo 1. Vast natural forest clearcutting by PT Arara Abadi District Nilo in Tesso Nilo block and destructed peat canal drainage. GPS location at S 0°0'39.12" E 101°56'29.20". EoF photo, 06 October 2011



Photo 2. An excavator is working on clearcut tropical rainforest in Tesso Nilo block where APP's subsidiary PT Arara Abadi district Nilo 1 located. Peat canal drained by APP. Photo taken by EoF on 6 October 2011 at GPS position S 0°0'48.61" E 101°56'15.92".



Photo 3. Vast natural forest clearcutting by PT Arara Abadi district Nilo in Tesso Nilo block. GPS location at S 0°0'48.55" E 101°56'15.60". Photo by EoF, 6 October 2011



Photo 4. Vast natural forest clearcutting by PT Arara Abadi district Nilo in Tesso Nilo block. GPS location at S 0°0'45.58" E 101°56'19.70". Photo by EoF, 6 October 2011



Photo 5. Vast natural forest clearcutting by PT Arara Abadi district Nilo in Tesso Nilo block. GPS location at S0°0'45.58" E 101°56'19.75". Photo by EoF, 6 October 2011

END

For further information, please contact :
Editor Eyes on the Forest
Afdhal Mahyuddin
Ph: 62-813 8976 8248
Email: eof@eyesontheforest.or.id

ⁱ WWF Indonesia (5 July 2012) Harimau Sumatera Mati Terperangkap Jerat di Riau. http://www.wwf.or.id/berita_fakta/berita_fakta/?22900/Harimau-sumatera-mati-terperangkap-jerat-di-Riau

ⁱⁱ Laumonier *et al.* (2010). WWF Indonesia (2010).

ⁱⁱⁱ Gillison, A.N. (2001) Vegetation Survey and Habitat Assessment of the Tesso Nilo Forest Complex. Pekanbaru, Riau Province, Sumatra, Indonesia (27 October – 10 November 2001). WWF Technical Report, WWF, Washington, DC, USA.

^{iv} Prawiradilaga, D. M. et al. (2003) Survey Report on Biodiversity of Tesso Nilo. May – August 2003. Indonesian Research Centre for Biology-LIPI & WWF Indonesia.

^v WWF Indonesia (16 June 2004) Monitoring of Illegal Logging Operations in Riau, Sumatra. Deliveries of Illegally Cut Wood from Proposed Tesso Nilo National Park to APP's Indah Kiat Pulp and Paper Mill in August 2003 and April 2004. http://www.wwf.or.id/attachments/Monitoring_of_Illegal_Logging.pdf

^{vi} Greenpeace (25 July 2011) Endangered Sumatran tiger dies in trap on APP concession in Indonesia. <http://www.greenpeace.org/international/en/news/Blogs/makingwaves/endangered-sumatran-tiger-dies-in-trap-on-app/blog/35859/>